

# Bio-mass Pelleting with Native Prairie & Ag residues

Eric Kreidermacher  
Alternative Energy Solutions LLC/  
Pork & Plants LLC  
March 2012





















## Future??

- Where do we go from here?
- More on-farm research needed on the native prairie system
- Consider other systems?
  - Annual grasses (millets, sudans, etc)
  - Perennials grasses (miscanthus, other non-natives, etc)
  - Ag residue (stover, straws, wood by-products, etc)

Eric Kreidermacher

Alternative Energy Solutions LLC/

Pork & Plants LLC

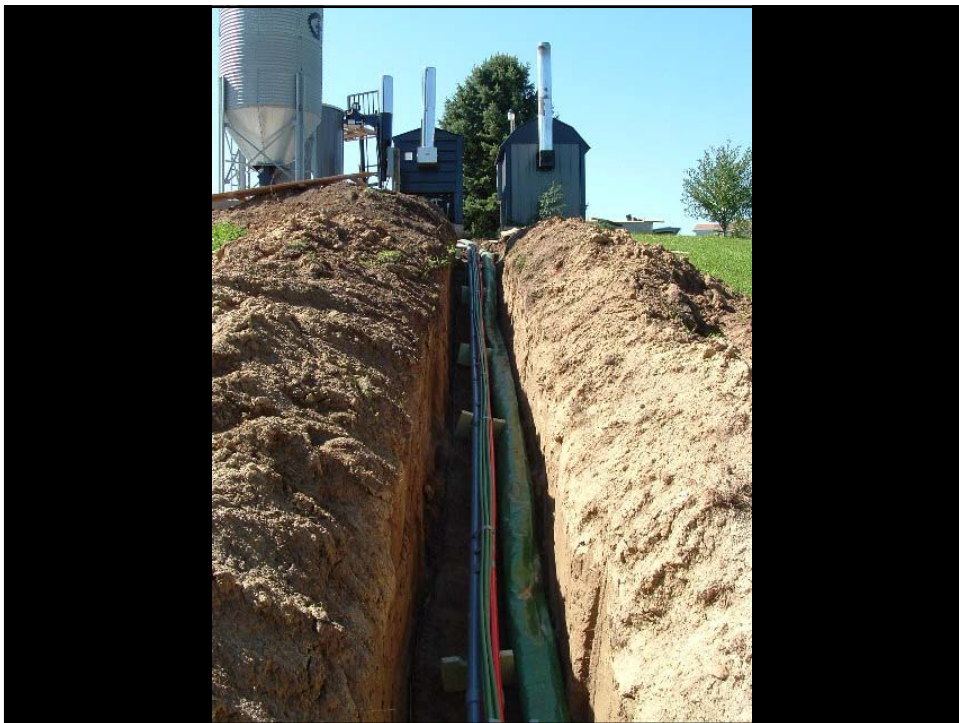
[Eric@porkandplants.com](mailto:Eric@porkandplants.com) 507-689-4032



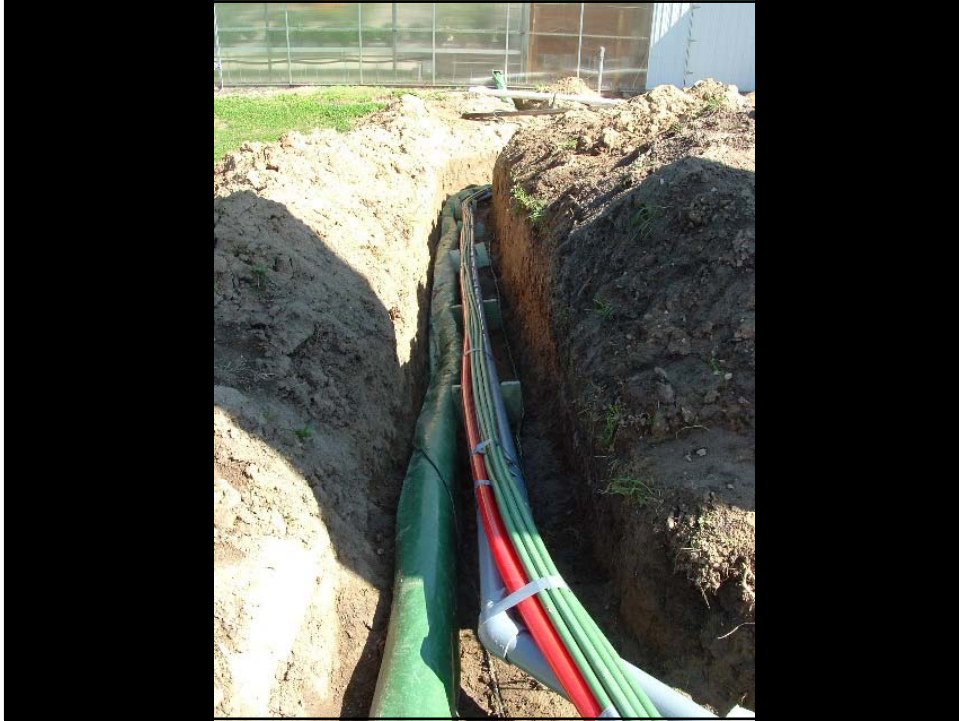
# Bio-mass Burner Installation

Alternative Energy Solutions LLC/  
Pork & Plants LLC























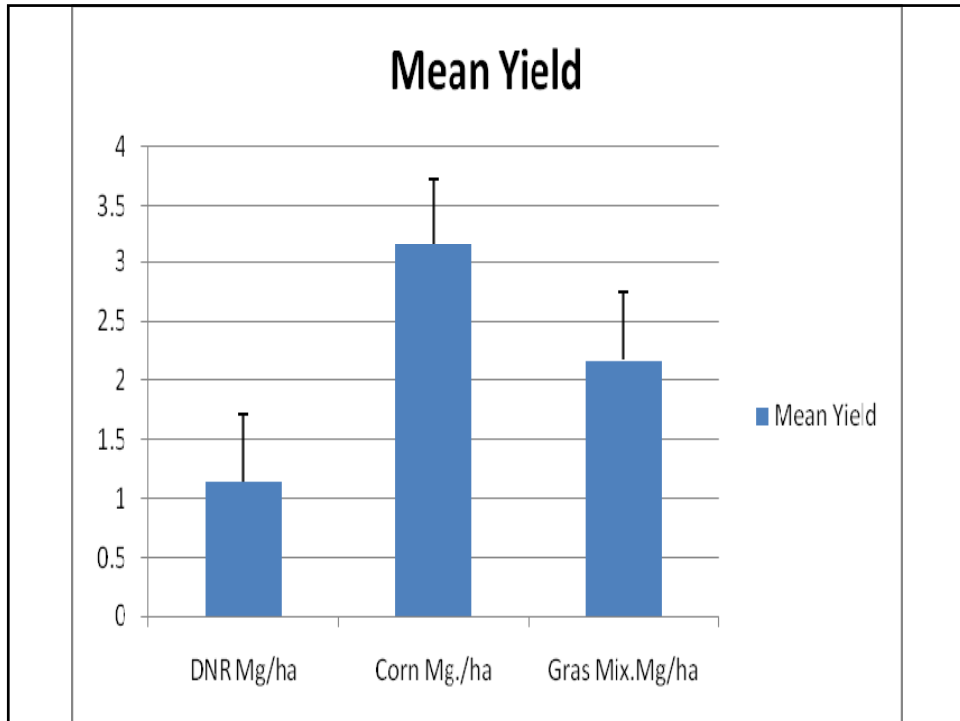












**Eric Kreidermacher**  
Alternative Energy Solutions LLC/  
Pork & Plants LLC

[Eric@porkandplants.com](mailto:Eric@porkandplants.com) 507-689-4032

